

Vol.109|Affordable Art Fair Fall New York 2025

# CONTEMPORARY ART GALLERY

Subsidiary of Contemporary Art Projects USA  
promoting art appreciation to the world

Affordable  
Art Fair

FIND US AT  
AFFORDABLE ART FAIR

NEW YORK  
FALL



**September 18 – 21, 2025**

Starrett-Lehigh Building, 601 W 26<sup>th</sup> Street, 4<sup>th</sup> floor, NYC

# AFFORDABLE ART FAIR FALL NEW YORK

## CONTEMPORARY ART GALLERY/PROJECTS USA

### GENERAL INFORMATION

**EXECUTIVE DIRECTOR** | Tata Fernandez

**DIRECTOR OF SALES AND MARKETING** | Carlos Julio Pabon

**SALES COORDINATOR** | Doris Silva

**LOGISTICS** | Manny Fernandez

**SHOW DURATION** | September 17 – September 21

**FIRST LOOK** | Wednesday, September 17 | 6:00PM – 9:00PM

**General Admission** | Thursday, September 18 | 12:00PM – 8:00PM  
**Art Supply Donation for Entry** 6:00PM – 8:00PM

**General Admission** | Friday, September 19 | 12:00PM – 9:00PM  
Saturday, September 20 | 12:00 – 8:00PM  
**Family Hours** | Sunday, September 21 | 10:00A.M. – 5:00PM

**ADDRESS** | Starrett-Lehigh Building  
601 West 26<sup>th</sup> Street, 4<sup>th</sup> Floor  
New York, New York 10001

**CONTACT INFORMATION** | 786-262-5886/786-3807916

**EMAIL** | [info@contemporaryartprojectsusa.com](mailto:info@contemporaryartprojectsusa.com)

**WEBSITE** | [www.contemporaryartprojectsusa.com](http://www.contemporaryartprojectsusa.com)

Published by Contemporary Art Projects USA



## **Message from the Executive Director**

Under the umbrella of Contemporary Art Projects USA, proudly announces the return of Contemporary Art Gallery at Affordable Art Fair Fall New York.

Our mission is centered on fostering art appreciation within the international community, with the goal of inspiring and assisting individuals in the art collection process. We are dedicated to generating resources that support artists' creative endeavors through heightened art awareness, artist promotion, and effective art procurement.

Collaborating with the industry's leading minds, we leverage our collective expertise and passion for marketing in the arts, culture, and entertainment sectors. From prestigious Biennales and gala auctions to exhibitions and major international art fairs, we are committed to innovation and creativity. Our objective is to engage audiences through compelling campaigns that resonate and inspire.

*Tata Fernandez*



**CARLOS JULIO PABON, Director of Sales and Marketing**

Carlos Julio has long harbored a deep passion for art, and throughout his professional career, he has amassed extensive experience in the realm of public art. His expertise encompasses a broad spectrum of activities, including curatorial work and the acquisition of art pieces for prestigious five-star hotels across the Caribbean, South America, and the United States.

In addition to his curatorial achievements, Carlos has played a pivotal role in enhancing the sales and marketing strategies of numerous galleries during significant art fairs, such as Art Miami, Context Miami, Wynwood Miami, and ARCO Madrid. His contributions have been instrumental in elevating the visibility and impact of these galleries in highly competitive environments.

Currently, Carlos has joined the Contemporary Art Gallery as the Director of Sales and Marketing. In this capacity, he is dedicated to fostering the development and growth of art sales and marketing initiatives on both national and international fronts. His strategic vision and wealth of experience position him to effectively drive the gallery's mission forward, ensuring that artists and collectors alike benefit from his expertise. We are excited to have Carlos on board and look forward to the innovations he will bring to our team.

E-Mail: [carlosj@contemporaryartprojectsusa.com](mailto:carlosj@contemporaryartprojectsusa.com)

Phone: +1-786-380-7916



### **DORIS SILVA, GALLERY COORDINATOR**

We are excited to announce the addition of Doris Silva as our new gallery coordinator. In her role, Doris will be responsible for managing the gallery's participation in both national and international art fairs, ensuring that we showcase our artists' work to a broader audience.

Doris brings a wealth of experience, and a diverse skill set that makes her an excellent fit for this position. Her background includes extensive work in the art industry, where she has successfully navigated the complexities of art sales, exhibitions, and fair participation. With her keen understanding of the art market and her dedication to supporting artists, Doris is well-equipped to guide them through the delicate processes involved in promoting their work.

E-Mail: [info@contemporaryartprojectsusa.com](mailto:info@contemporaryartprojectsusa.com)

Phone: +1-786-262-5886

## **PARTICIPATING ARTISTS**

Alex Z. Wang  
Alina Poloboc  
Barry Yeow  
Betti Brillembourg  
Carmine Bilardello  
Carola Orieta Sperman  
Chadwick Arcinue  
Christian A. Albarracin  
Dale Reid  
Ethel Gittlin  
Evangeline Ang  
France Gaggioli  
Gregg A. Emery  
Jacqueline Popovic  
Jorge A. Gomez-Cocke  
Karen Davis and Pepa Martin Collaboration  
Michele A. Utley Voigt  
NANA S.R.T.  
Serge Hamad  
Sergio Gutierrez  
Sinal Bajaj

Alex Z. Wang is New York City-based Contemporary Fine Artist.

“The strength of your portfolio lies in its emotional intelligence; the atmosphere you craft through abstraction is both personal and universal. It evokes memory, transition, and dream states. A clear, sincere, introspective, and evolving voice is evident here.” — Rita Cerciello, Curator for Gagolian

Statement My work is a meditation on atmosphere, movement, and the emotional landscapes that reside between perception and sensation. Through oil on canvas, I explore the shifting interplay of color, light, and texture—each painting a dynamic field in which form dissolves into energy. I am drawn to the transient, the liminal, and the echoes of memory that linger in abstraction, seeking to capture the silent rhythm of motion, the pull of gravity, and the tension between fluidity and structure.

My practice is deeply informed by dance, film, and the evolving visual language of contemporary art. As an avid patron of performance and an observer of the body in motion, I channel this kinetic presence into my work. My paintings embody a choreography of gesture and restraint, where brushstrokes expand and contract, pulse and dissipate—like a breath held and released.

I regard painting as an ongoing dialogue between intention and intuition, precision and spontaneity. Whether through deep, saturated tones or the delicate dissolution of light, I strive to evoke a space in which viewers may pause, immerse themselves, and discover their own reflections within the layered surfaces. My canvases do not tell conventional stories; rather, they offer moments of stillness, an invitation to feel, to wander, and to embrace the ambiguity of the in-between.

He has participated in major art fairs, including Art Santa Fe, East Hampton Art Fair, Clio Art Fair among others.

**Alex Z. Wang | China**

**Alex Z. Wang | China-USA**



**Azure in Rhapsody**

Acrylic on Canvas

36" x 48" x 2"



Alina Poloboc is a contemporary artist born in Bender, Transnistria, an independent country within Moldova, in 1991. Alina has become a global citizen, dividing her time between Miami, Florida, and Palma de Mallorca, Spain. Initially earning a degree in International Relations and Political Science, she worked as a television presenter for three stations in Moldova. However, during a two-year stay in Bolzano, Italy, she discovered her true passion for painting. A holiday in Palma de Mallorca captivated her with the island's unique light, inspiring her to begin painting. She attended painting courses for two years, transforming her intense passion into a professional career.

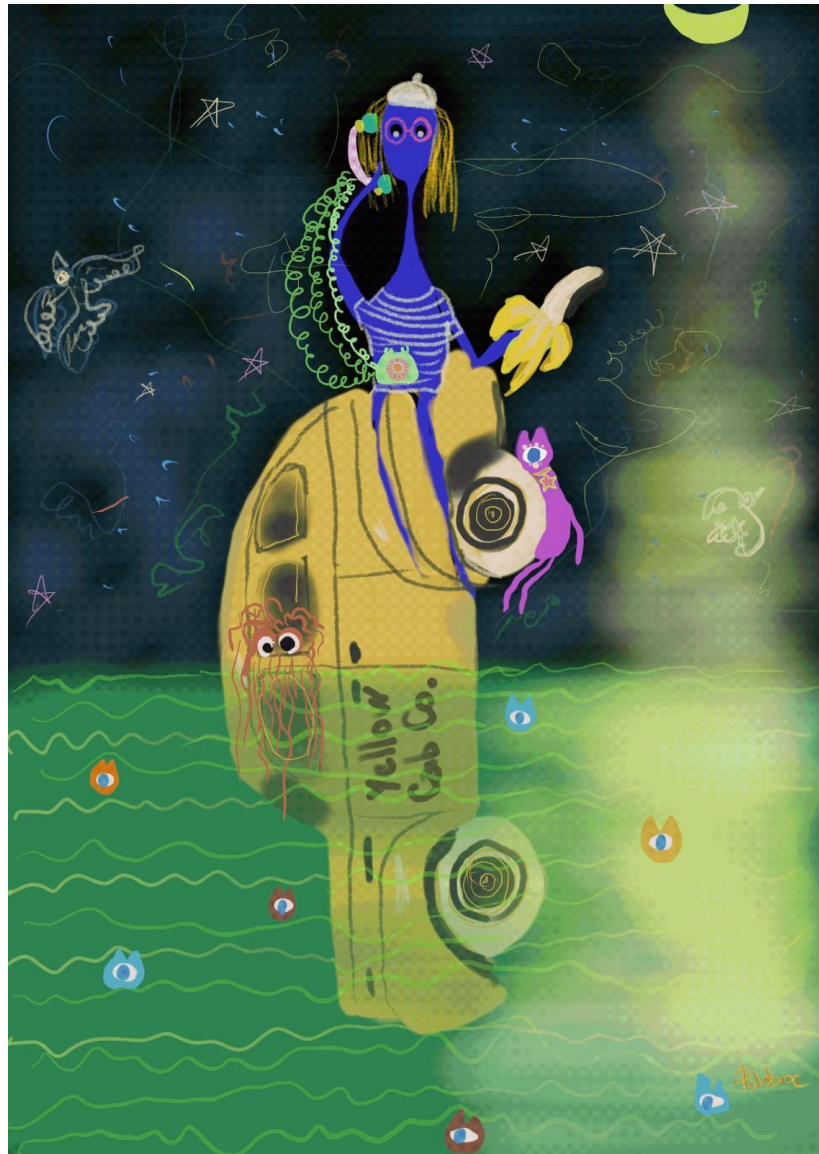
Her art, with its figurative allure and abstract expressions, serves as a reflection of her innermost emotions. From graceful ballerinas to vibrant hues of blue, each stroke on canvas tells a story of passion and resilience. Alongside traditional mediums, she has delved into the realms of digital art, exploring 3D animation and the exciting world of NFTs.

She will be exhibiting at the fair one of her pieces from the new series called **"Tribute to the Masters"**. She created her first piece called "Yellow Cab" where she captures the unpredictability of love and life in the city that never sleeps. The painting is inspired by the tale of a young man, thrilled for his very first date night in New York. He hails a Yellow Cab, dreaming of candlelight and conversation, but fate intervenes — a mysterious lilac cat crosses his path, sending the cab tumbling beneath the Manhattan Bridge into the dark waters below.

Instead of despair, the man chooses imagination. With a phone call and a spark of creativity, he invites his girlfriend to join him right there, transforming the sunken cab into a stage for their unforgettable night. The piece celebrates resilience, humor, and the magic of rewriting one's own story, where a simple accident becomes a fantastical memory etched in bright colors and playful forms.

**Alina Poloboc | Moldova-USA**

# Alina Poloboc | Moldova-USA



## Tribute to the Masters Series

### Yellow Cab

Mixed Media on Paper Encapsulated in Acrylic

64" x 48" x 2"

Born in Singapore, Barry Yeow is a self-taught artist whose interest in drawing started at a very young age. He continued what he loved till after stumbling into some art trainers, his inclination progressed towards further understanding the arts and he became a full-time artist in 2011.

Barry became a studio owner / art teacher in 2015 and exhibited his work both in local and international exhibitions. Inspired by impressionists such as Monet, his works are often expressed with heavily textured mediums with vibrant and lively hues. His work can be seen to be very spiritually inspired by its approach, and he believes that hope is an essential commodity in everyone's lives. As a result, mural painting is part of his portfolio because he emphasizes that happiness can be spread through art making. Creating artwork has given him joy and contentment. He wants his art to impact and inspire others to do likewise. Create.

**Barry Yeow | Singapore**

Barry Yeow | Singapore



**Blooming Giggles**

Acrylic on Canvas

36" x 36" x 2"

**Betti Brillembourg**, originally from Italy and now residing in the United States, presents her installation *Identity Journey Collection*, a body of work that reflects on the layered and complex process of constructing personal and collective identity. The pieces within the collection may be acquired individually or as a group, yet each work resonates as part of a larger narrative that ties them together into a unified whole.

At the heart of this series is the concept of **Identity Itinerary**—an invisible cartography of the traces human beings leave as we move through life. These are not fleeting impressions but indelible marks: gestures, memories, encounters, and farewells that inscribe themselves upon our existence. Brillembourg's work suggests that identity is not static but rather an evolving journey, a map continually redrawn by experience.

The collection explores how each step, however ordinary or extraordinary, becomes a signifier of belonging, resilience, and transformation. It evokes the poetic truth that our identities are living paths—lines that converge and diverge, binding us to one another through shared experience while honoring the uniqueness of each personal story.

With sensitivity and vision, Brillembourg transforms these ideas into a visual language that is at once intimate and universal. Her *Identity Journey Collection* invites viewers to reflect on their own itineraries, to recognize the invisible traces they carry, and to discover in them a deeper understanding of how identity shapes, connects, and endures across time.

**Betti Brillembourg | Italy-USA**



# Betti Brillembourg | Italy-USA



## **Identity Journey Collection**

Acrylic with Epoxy Resin, Tint Resin

Each Piece is 9" x 9" x 4"

Carmine Bilardello is an Italian-USA contemporary artist. Carmine earned his **BFA from Parsons School of Design** in the 1970s and pursued further studies in **Fine Art at Adelphi University** and **Architecture at Oklahoma State University**. For more than four decades, he has navigated seamlessly between the worlds of **interior design, corporate real estate, and fine art**. His professional career includes senior executive positions at **Shearson Lehman Brothers, Citibank, and Willis Group**, where, during his years in London, he oversaw the completion of the iconic **Willis Building**, a project recognized with multiple prestigious architectural awards. Alongside his corporate career, Carmine shared his expertise as an educator, teaching **drawing and design** for over nine years at Parsons and several other institutions.

In 2013, Carmine returned to his first passion—art. After a brief period working from a studio in New York’s Chinatown, he relocated to Florida, where he continues his artistic practice today. His work has evolved from controlled, Pollock-like abstractions to striking compositions of **flags and hearts**, unified by his signature use of masked, precise lines. Recently, his practice has expanded into explorations of **portraiture** and the playful, expressive series of “**duckies**.”

Carmine’s work has been exhibited at significant art fairs, including **Red Dot during Art Miami Week 2025** and **Art Santa Fe 2025**. He is currently represented by **Contemporary Art Gallery** and will be featured in the Gallery’s booth at the **Affordable Art Fair – Fall Edition 2025**.

**Carmine Billardello | Italy-USA**

# Carmine Billardello | Italy-USA



## Billardello Heart Collection

Each Piece is 13" x 13" x 2"

Resin Figurines on MDF Board Epoxy Resin



In 2000 she established in Miami, where she pursued her art education and developed her artistic trajectory. Her journey began with a foundation in architecture and interior design, where she honored her skills in structural aesthetics and spatial dynamics. The influence of her mother, a well-known designer in the fashion industry, brought a fresh perspective to her creations, blending architectural precision with the fluidity and expressiveness of textiles.

This diverse expertise culminated in the development of her signature conceptual modern sculptures. Her sculptures are made from bronze, stainless steel, and laser cut acrylic molded with heat and thermic gloves, giving her only a few seconds to shape and model the material before it cools down and returns to its original rigid state. She has developed a solid conceptual approach to contemporary sculptures, as well as mixed media 2D artworks, embodying a blend of hand-painting and a technological innovation using AI.

She has exhibited at Context-Art Miami, Hamptons Art Fair, Palm Beach Contemporary Art fairs, among others. Bal Harbour Bespoke, Galeria Azur Madrid, Berlin, Miami and Milan, European Cultural Center in the context of Venice Biennale 2022, Missoni Art Event, Bella Italia, Casa Bella Art Space, Braman Art Basel Art Immerse Experience, Palm Beach Atlantic University, Bergdorf Goodman Gallery, etc.

**Carola Orieta Sperman | Argentina**

# Carola Orieta-Sperman | Argentina



## **Ame d' Azur**

Hand Modeled Acrylic Sculpture

20" x 19" x 20"

In addition to her sculptural practice, **Carola Orieta** also paints and develops contemporary works such as *Allure: Simple Beauty*, an acrylic on canvas that embodies her sensitivity to form, texture, and emotional resonance.

*Allure-Simple Beauty* is not confined to the surface—it lives in quiet strength, unspoken power, and the soul beneath the skin. With each brushstroke, every layer of blue whispers a story of resilience, softness, and confidence intertwined. Her blue velvet skin introduces a surreal, mysterious quality that draws the viewer into her world.

True beauty requires no embellishment. It is found in the way we carry ourselves, the energy we radiate, and the quiet power we hold. Orieta's *Allure* captures this essence, inviting us to reflect on beauty not as appearance alone, but as an enduring presence that unites strength, mystery, and grace.

**Carola Orieta Sperman | Argentina**

# Carola Sperman-Orieta | Argentina



## **Allure – Simple Beauty**

Acrylic Paint on Canvas

60" x 40" x 2"

Experimentation guided by intuition defines Chadwick Arcinue's artistic vision—a journey that began over two decades ago with his first painting while studying at Boston College. Though he pursued a career in finance, Arcinue continued to refine his self-taught practice, evolving from impressionist influences into bold abstract and expressionist compositions. In 2018, he fully committed to art, founding The Chadwick Concepts and building a prolific body of work.

His collections radiate energy and diversity: *Spring Forward* and *Earthscapes* celebrate color and texture; *Lightscapes* shimmer with drips and splatters; *Dreamscapes* captivate with puzzle-like geometry; and the *Red Series* explores drama and vitality. His most recent collection, *Colorscapes X*, reimagines his celebrated series through compact, sculptural 20" x 20" works—playful, bold, and unapologetically modern.

Arcinue's work has been exhibited internationally, including at CONTEXT Art Miami and Art Santa Fe, and represented by galleries in both the United States and Europe. Originally from the Philippines and now based in New Jersey, he continues to transform fleeting impressions into dynamic works that resonate with energy, emotion, and discovery.

**Chadwick Arcinue | Philippines-USA**

# Chadwick Arcinue | Philippines-USA



## **Bloom 2025**

Acrylic on Wood Panel Encapsulated in an Acrylic Box

20" x 20" x 4"

**Christian A. Albarracín** (b. Bogotá, Colombia, 1984) is a contemporary artist whose three-dimensional paper installations transcend the traditional boundaries between artwork and environment. In his ongoing series *City Subjects*, the wall becomes more than a backdrop—it becomes an extension of the body, activating space with works that hover between presence and absence, fragility and strength. Albarracín describes his process as capturing *“that moment when the everyday transforms into visual poetry.”*

A self-taught artist, Albarracín has spent over eight years developing a distinctive approach to paper, a medium he views as both delicate and resilient. Through manipulation, layering, and exposure to natural elements such as water, he pushes the material beyond its conventional role as support, transforming it into a sculptural partner. His works range in scale from 30 cm to 2 meters, and each piece invites viewers to reflect on texture, durability, and transformation. For Albarracín, paper becomes a metaphor for human experience—fragile yet enduring, pliable yet profound.

His work gained heightened resonance during the COVID-19 era, when isolation and distance reshaped urban life. Albarracín’s installations captured these subtle tensions, evoking the fragility of connection while affirming resilience through form and space. Represented by galleries in the United States, he has participated in major international fairs such as **Art Miami – CONTEXT** and **Art Palm Beach**. With each exhibition, Albarracín expands the dialogue between material, environment, and human presence, establishing paper as a sculptural force that embodies both vulnerability and strength.

**Christian A. Albarracin | Colombia**



# Christian A. Albarrancin | Colombia



## **Individuals of the City**

Three Dimensional Compositions in Layers  
of Paper

10" inches height



In this digitalized world of pop art photography, Dale's unique traditional monochromatic images contain elements of being a painting or graphite. The lack of color allows the viewer to focus on the variety of textures and the richness of interesting lines and shapes that engage in an elegant, visual synthesis in each photograph. Reid developed her artistic style with a strong focus on creating landscape images ranging from maritime to urban to industrial views. Today, her artwork is primarily created in the studio where she imbues botanical subjects with unimaginable personality and emotion.

### **Floral Studies. As per the artist:**

"Daily, we are exposed to a wide range of colors from pastels to the very vivid. These colors are present in everyday life across a broad range of subjects from landscapes to flowers and everything in between.

Switching to black & white film, I eliminated the distraction of color. This allowed me to interact with the subjects by focusing on textures, shapes, forms, staging plus the application of light creating expressive floral studies.

It is said that flowers are a true reflection of how people who give them feel. My feelings are expressed through the selection of the flower and creating the image. My varied life experiences, including being a member of the LGBTQ+ community and now living as a transgender woman, opened my mind to new perspectives influencing my artistic vision.

I often receive the following feedback on my unique floral studies:

- Questioning whether the images were a painting or graphite.
- Expressing the sensual appeal of the studies.
- Comparing my studies to Mapplethorpe and O'Keefe. "

**Dale Reid | Canada**

**Dale Reid | Canada**



**Calla Trois #1**

Silver Gelatin Print

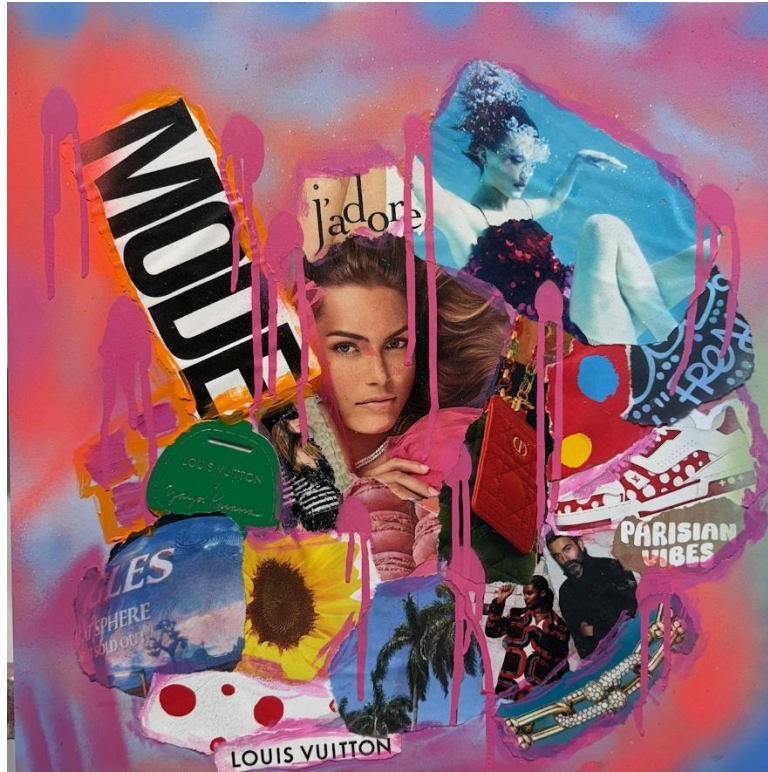
20" x 16" x 4"

Ethel Gittlin is a contemporary artist who lives and works between New York and Florida. She recalls the unexpected beginning of her career: *"I woke up one morning, many years ago, with an irresistible desire to paint. It seemed to come out of nowhere—shocking even to me. What began as a whim quickly became my life's work."* Since then, her artistic practice has evolved through a wide range of mediums and styles, moving from oils to photography combined with oils, from abstraction to semi-realism, and back to abstraction—this time through the use of spray paint and resin. Her most recent works are bold mixed media compositions that incorporate French and European fashion magazines, digitally altered photographs, spray paint, acrylics, oils, and stencils, all sealed with hand-poured resin to create a vibrant, contemporary finish. As the artist notes, her latest series celebrates the tactile interplay of memory, fashion, and culture: *"Some things luxe. Some things not. Things I love to see. Things I love to touch. Passionate to the core."* (#fashionartculture).

Her work is represented by Walter Wickiser Gallery, New York, and Contemporary Art Gallery USA, Miami, and is included in numerous private and corporate collections. Her paintings have also been selected for U.S. Embassy collections in Moscow, Estonia, and Qatar, underscoring their international resonance. Over the years, Gittlin has exhibited widely, participating in prestigious art fairs such as Art Miami, Concept Art Fair, Miami, and Art on Paper, Pier 36, New York City, solidifying her presence in the contemporary art world.

**Ethel Gittlin | USA**

# Ethel Gittlin | USA



## High Style

Paper Collage of Old Fashion Magazine

Covered on Resin

18" x 18" x 2"

**Evangeline Ang** is a Singaporean artist who returned to her lifelong passion for painting after dedicating two decades to her family's business. Inspired by her deep fascination with nature, light, color, and texture, she creates vibrant works that explore both visual and tactile experiences. Her process involves layering diverse mediums to build texture and depth, producing compositions that engage viewers from afar while revealing intricate details upon closer inspection. This approach reflects her ongoing exploration of the interplay between materiality, emotion, and perception.

Since reigniting her artistic journey, Ang has steadily gained recognition on both local and international platforms. She was a **finalist at the Angelico Art Award in 2022**, with her work successfully auctioned online. Her growing international presence includes exhibitions at **Art Expo New York, Art Santa Fe, Art Expo Dallas, and Red Dot Miami**, as well as **Art Wynwood 2023**, presented by Art Miami. That same year, her work was showcased at **Bergdorf Goodman in New York**, where it was acquired by a prominent collector, and she achieved sales at the **Affordable Art Fair Singapore**. Today, her paintings are part of private collections in Singapore, Taiwan, Indonesia, and the United States, underscoring her rising reputation in the contemporary art world.

**Evangeline Ang | Singapore**

# Evangeline Ang | Singapore



## **Curl**

Acrylic and Mixed Media

On Canvas

60" x 60" x 2"

France Gaggioli is a contemporary abstract artist whose work explores the intricate emotional and environmental relationships between nature's resilience and fragility. Inspired by elemental forces—water, earth, wind, and fire—her textured compositions evoke dynamic landscapes, geological transformations, and the subtle rhythms inherent in the natural world.

Utilizing layered acrylics, Gaggioli creates surfaces marked by delicate fractures, mineral pigments, and organic flows. These visual elements serve as poetic reflections on the Earth's continual evolution—whether through gentle shifts or tumultuous upheavals—inviting contemplations on vulnerability, erosion, and the enduring beauty that persists amidst change.

With a multicultural background shaped by extensive residence across Europe and Asia, her artistic practice is imbued with a nuanced sensitivity to the interplay of place, memory, and materiality. Her recent series, including *Elemental* and *Resilient Shadows*, exemplify a contemplative yet expressive visual language rooted in material experimentation and emotional depth.

Gaggioli's work has been exhibited at international art fairs and group exhibitions and is part of private and corporate collections across Asia and Europe.

**France Gaggioli | France-Singapore**



# France Gaggioli | France-Singapore

## Elemental Series



### **Mystic Whispers**

Acrylic on Canvas

36" x 36" x 2"

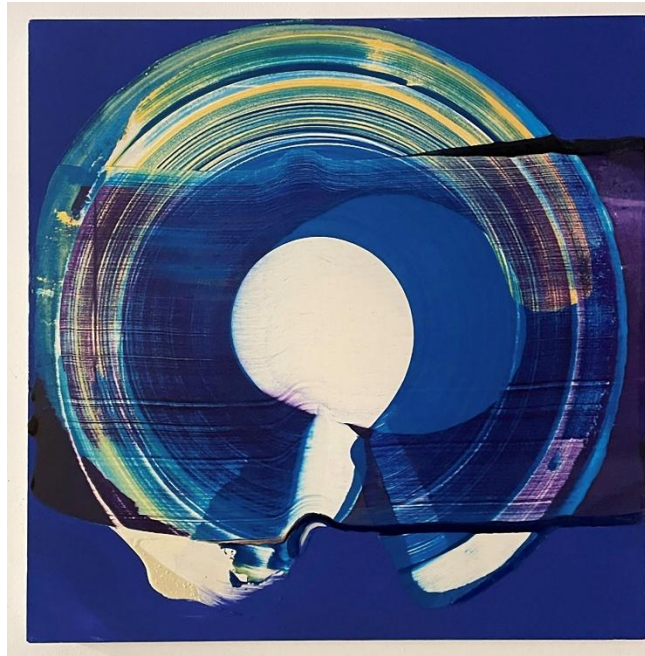


Gregg Emery explores time, rhythm, and perception through his distinctive abstract practice. Known for his recurring use of the circle as a motif, his works trigger both intended and unexpected associations, inviting viewers into ever-evolving interpretations. Influenced by Einstein's ideas of relativity, Emery captures the shifting ways time is experienced—from speed and movement to stillness and meditation. His gestural marks layered pulls of paint, and use of water embody both control and unpredictability, creating works that resonate with the elegance and rhythm of life itself.

Emery has received international recognition, exhibiting in Brussels, Beijing, New York, and Miami. His large-scale mural on Roosevelt Island was highlighted by *Time Out NY*, the *Gothamist*, and *The New York Post* as one of the top Instagrammable sites of the summer. His work has been showcased at prestigious fairs such as Scope and CONTEXT Art Miami, as well as the Cube Art Fair in Brussels alongside artists like Chuck Close. Beyond exhibitions, Emery is deeply committed to community, restoring an historic church in his hometown to create a future art studio, residency, and school for local children, including the nearby Mohawk population.

**Gregg Emery | USA**

**Gregg Emery | USA**



**Mackerel Memory**

Acrylic on Muslim

20" x 20" x 2"

New York native Jacqueline Popovic interlaces art, nature & existential themes in her craft. She attended Parsons School of Design and was a thesis finalist for, "Marketed Imitations: Investigation of the Synthetic Diamond Industry", which led to her exploration of semi-precious stones.

Her artistry oscillates in the juxtaposition between the old and the new. Studying depth, layer, and texture she combines century old techniques such as needlepoint and sculpting with the latest technologies, to express multidimensional perspectives.

This series explores the profound connection between humanity and nature, where the boundaries between the two dissolves into a harmonious whole. Set on transparent plexiglass and finished with crushed semi-precious stones and glass, each piece reflects the raw beauty and intricate textures of the natural world, inviting the viewer to see themselves as an extension of it.

Harmonia : Balance and coexistence. It conveys the seamless blending of the human figure, insects, and natural elements - showing how all parts create one living whole.

Kaleido: Transformation through shifting perspectives. Like a kaleidoscope, it reflects multiplicity and constant change, mirroring nature's cycles and the merging of forms.

Evolutio: Growth and transformation. This captures metamorphosis- both literal (butterflies) and metaphorical (human becoming nature) - emphasizing the fluid continuum of life and change.

She has been represented by Contemporary Art Gallery and participated in main art fairs as Context Art Miami, Art Palm Beach among others.

**Jacqueline Popovic | USA**

# Jacqueline Popovic | USA



## **Harmonia**

Semi-precious Stones, Glass and Paper  
on Plexiglass

20" x 20" x 2"

Jorge A. Gómez, known artistically as Cocké, is a distinguished visual artist originally from Colombia, with over thirty years of experience in the fine arts. His work seamlessly integrates classical techniques with contemporary conceptual innovation, engaging with profound themes such as identity, emotion, and human condition. He is currently based in Andover, Massachusetts.

My artistic practice is rooted in an ongoing dialogue between the classical and the contemporary deeply personal exploration of form, color, and emotion as fundamental aspects of human experience. Over the course of more than three decades, I have developed a distinctive visual language where symbolic and material layers converge, creating compositions that inhabit the space between the figurative and the conceptual.

My work spans a diverse range of media, including monumental murals, sculpture, fine art, and photography. It is driven by an expressive impulse rooted in introspection. I seek to explore the tension between order and chaos, visibility and concealment, in an ongoing effort to give form to the intangible—capturing fleeting moments, suspended memories, and the vital energy that transforms silence into expression.

For me, art is both an act of introspection and revelation—a space where the invisible manifests and emotion take shape. Within this space, color transcends merely to pigment to become a heartbeat; form becomes a lasting imprint of the soul.

He has participated in many international exhibitions as well as national and international art fairs.

**Jorge A. Gomez-Cocke | Colombia-USA**

# Jorge A. Gomez-Cocke | Colombia-USA



## **Blue Pulse**

Mixed Media on Canvas

36" x 48" x 2"

Australian artists Karen Davis and Pepa Martin embarked on their creative collaboration in 2005, drawing inspiration from the ancient Japanese art of shibori. Their textile artworks are distinguished by their remarkable fluidity, presenting a contemporary interpretation that contrasts with the traditional precision typically associated with shibori techniques. Each piece emerges from a spirit of experimentation, reflecting their innovative approach to textile art.

The duo's heat-set creations showcase sculptural fabrics that encapsulate both form and dimension. Their artistic process is nothing short of luxurious, beginning with a meticulously curated color palette. This is followed by the crafting of extensive lengths of heat-set silk, which retains its shape when dried and pleated. The resulting sculpted fabric is dynamic, exuding a sense of movement and vitality, all held together by delicate stitches. By layering sheer materials, they add depth and complexity, ensuring that each artwork captivates viewers in its own unique way.

As prominent figures within the Australian textile scene, Davis and Martin have made significant contributions to the field through their published works. They authored two influential books—*Shibori Recreated* in 2011 and *Tie Dip Dye* in 2014—which have served as important resources for both artists and enthusiasts alike. Additionally, they have conducted numerous workshops at their Sydney studio, playing a vital role in nurturing the shibori community and ensuring the continued vibrancy and relevance of this exquisite art form. Through their dedication, they inspire a new generation of artists to explore and celebrate the beauty of textiles.

They have been represented in the United States by **Contemporary Art Gallery**, achieving complete success through their participation in major international art fairs such as **CONTEXT Art Miami** and **Art Palm Beach**. Over the year, their work has attracted the attention of distinguished collectors, further affirming their growing recognition and impact within the contemporary art world.

**Pepa Martin and Karen Davis | Australia**



# Pepa and Karen Collaboration

## Australia



### **The Light Sky at Leura**

Silk Modeled  
and  
Colored Under the  
Japanese Shibori Technique  
35" x 38" x 4"



**Michele Utley Voigt** has built a distinguished career marked by international exhibitions, prestigious commissions, and an elite roster of collectors. Her recent induction into the **Bergdorf Goodman permanent collection**—with works presented at the iconic Fifth Avenue flagship and across the retailer's print and digital catalogues—underscores her growing impact in the contemporary art world.

Voigt's canvases, powerful celebrations of feminine courage and grace, have headlined solo projects for **Aston Martin** and electrified audiences at **CONTEXT Art Miami**, **Palm Beach Modern + Contemporary**, the **Florence Biennale**, and **SCOPE**, while also entering museum and corporate collections worldwide. Currently, she is preparing to unveil her acclaimed **ICON series** at the **Affordable Art Fair New York 2025**. These New York-charged works fuse metropolitan grit with gilded feminine resilience, offering unapologetically bold narratives poised to captivate both juries and collectors alike, further cementing Voigt's reputation as an artist whose vision reverberates far beyond the studio.

**Michele A. Utley Voigt | USA**

**Michael A. Utley Voigt | USA**

**Icons Series**



**Truth**

Mixed Media, Oil Paint, 24K Gold on Canvas

18" x 18" x 2"

**Nana Sakura Rosalia Tinley Klimek (NANA S.R.T.)** is a photographer of Austrian–Japanese heritage, living and working between London and Vienna.

Her first photographic series, *MOVE!* (2009), explored the expressive world of dance and remains part of her public portfolio. A decade later, in 2019, she made her public debut at *The Other Art Fair* with Saatchi Art in Brooklyn, New York. Since then, her work has been presented at numerous international art fairs, including *Red Dot at Miami Art Week* (2022, 2023), *Art Wynwood* (Miami, 2023), *Art Santa Fe* (2023), and *Parallel Vienna* (2024).

Her exhibitions extend to group presentations at the *Setagaya Art Museum* (Japan), *Bergdorf Goodman* (New York), and a variety of independent and community-driven art events in East London.

In 2024, she published her first photobook, *DAIDO LOVE*, with Photobook Café Editions, launching it at *Offspring London* and *Peckham24*. The book is held at *The Photographers' Gallery* and *Photobook Café* in London, as well as at *WestLicht* in Vienna.

Dance continues to be a central inspiration in her artistic journey, though her lens also extends to the vibrancy of everyday life. Through *DAIDO LOVE* and her ongoing projects, NANA S.R.T. captures the interconnectedness of movement, urban experience, and human connection.

Her work is included in private collections across Europe and the United States.

**NANA S.R.T. | Japan-Austria**

# NANA S.R.T. | Japan-Austria



## Kagura

Direct Print on Aluminum Dibond

35" x 30" x 2"

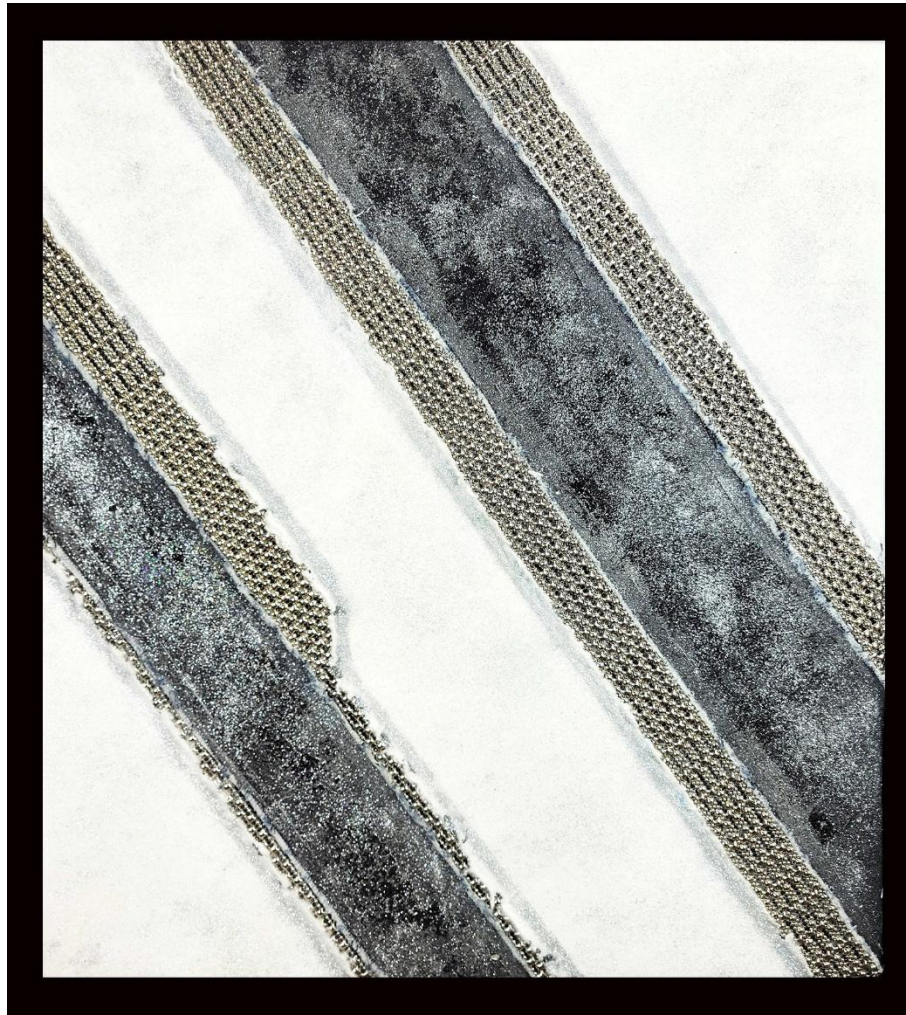
**Sergio Gutiérrez**, born in Colombia and now based in the United States, made a remarkable debut with Contemporary Art Gallery at *Art Santa Fe 2025*, where his work was met with great success and enthusiastic admiration from collectors. Though this marked his first presentation at the fair, his art immediately resonated on an international level, affirming a career distinguished by innovation, mastery, and vision.

At the heart of Gutiérrez's practice lies a poetic dialogue between precision and emotion, structure and intuition. His signature medium—an intricately woven ball chain mesh—is the result of more than three decades of exploration, producing over fifty original patterns and more than a thousand jewelry designs that embody both craftsmanship and devotion. Building upon this legacy, Gutiérrez has pioneered an avant-garde fabric canvas, crafted from specially treated materials that elevate his mesh into a bold new dimension of artistic expression.

This series embodies the tension between two realms: the millimetric precision and architectural rigor of the mesh, and the spontaneous, emotional depth of the canvas. Through vivid layers of color and texture, his works affirm that precision and control cannot exist without imperfection, passion, and, at times, a chaos of profound beauty. In this balance, Gutiérrez reveals the essence of his vision—where craftsmanship transforms into art, and innovation unfolds as poetry.

**Sergio Gutierrez | Colombia-USA**

**Sergio Gutierrez** | Colombia/USA



**Echo Dust A**

Mixed Media, Mesh Metal and Fabrics

24" x 24" x 2"



Serge Hamad is a visual artist based in New York, with French and Algerian roots. He began his journey in photography at a young age, using both video and photography to cover war zones and shed light on sociopolitical situations in places like Iraq and the Balkans during the mid-1980s.

Having been exposed to both Western and Eastern cultures in his youth, Serge Hamad believes that an artwork is successful when once injected into the communication channels it manages to awaken a dialog.

In his Temporal Perception series, he transforms realistic images into abstract forms by blending colors and blurring the lines between photography and digital rendering. When viewed at first glance, the artworks appear to create a cohesive whole. The artist states, "It's only when our brain starts analyzing our vision that we realize how we've lost our childhood." In 2010, Serge Hamad shifted his focus mainly to Fine Art photography. His work has since been exhibited at various galleries in the US and internationally, and has been auctioned at prestigious venues like Artsy, Christie's London, Sotheby's House, and Robert Wilson's Water Mill Foundation.

**Serge Hamad | France-USA**



# Serge Hamad | France-USA



## Childhood Perception

Acrylic, Wood, Cement and Aluminum

12" x 20" x 3"

**Sinal Bajaj** is an international artist whose practice investigates the unseen patterns that connect the universe. Central to her work is *The Syndrome*, an evolving philosophy through which she explores the balance between chaos and order, structure and unpredictability. A synesthetic artist, Bajaj experiences a heightened dialogue between color, texture, and emotion, translating intangible sensations into layered visual compositions that invite curiosity and contemplation.

This oval-shaped composition transforms hundreds of vintage postage stamps into a vivid chromatic mosaic. Carefully arranged across the surface of sturdy duck cotton, the collage flows from cool blues and violets through fiery reds and oranges into grounded greens, creating a visual rhythm that recalls both a world map and a human visage.

Each stamp carries traces of circulation, memory, and geography, and together they form a global archive reimagined as art. By elevating these fragments of communication into a cohesive whole, the work reflects identity, belonging, and the exchange of culture across time and place.

With exhibitions spanning continents, Bajaj has established herself as a global voice in contemporary art. At this fair, she introduces *The Syndrome* as an immersive space where art, intuition, and the unseen converge, prompting viewers to reflect on their own place within life's intricate patterns.

**Sinal Bajaj | India**

# Sinal Bajaj | India

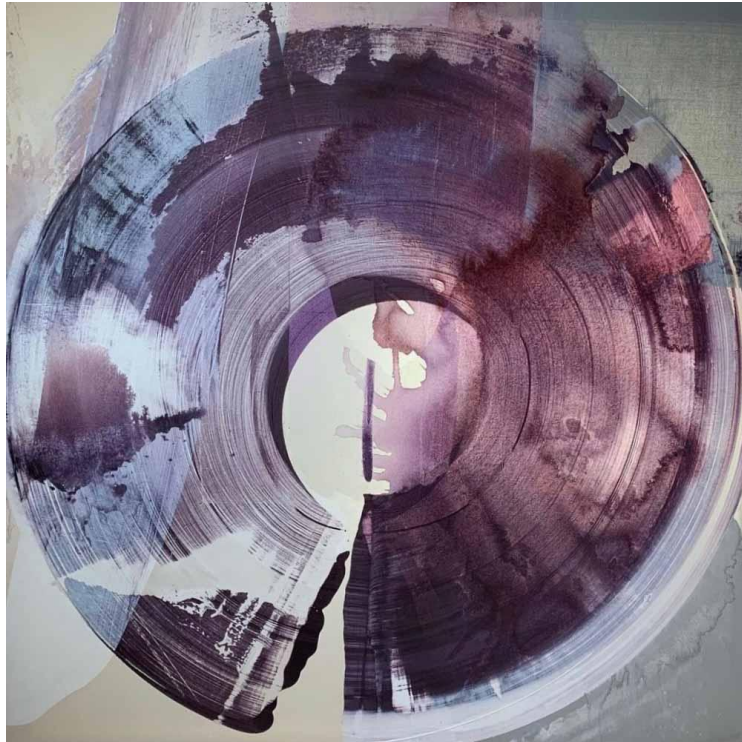


**The Line Between Here and There**  
Vintage Postal Stock on Duck Cotton

24" x 20" x 2"

**CONCURRENT EXHIBITION**  
**Contemporary Art Projects USA at**  
**Online Bergdorf and Goodman**  
**754 5<sup>th</sup> Avenue**  
**New York, New York 10019**

Online Collection are co-curated by Cydney Preston, Executive Buyer, Home, and Decoration... and by Andrew Mandell, Vice-President, DMM, Home and Jewelry at Bergdorf and Goodman.



Absentia by Gregg Emery

Visit  
[www.berdorfgoodman.com](http://www.berdorfgoodman.com)  
Search  
contemporaryartprojectsusa



Contemporary Art Gallery  
Fine Art